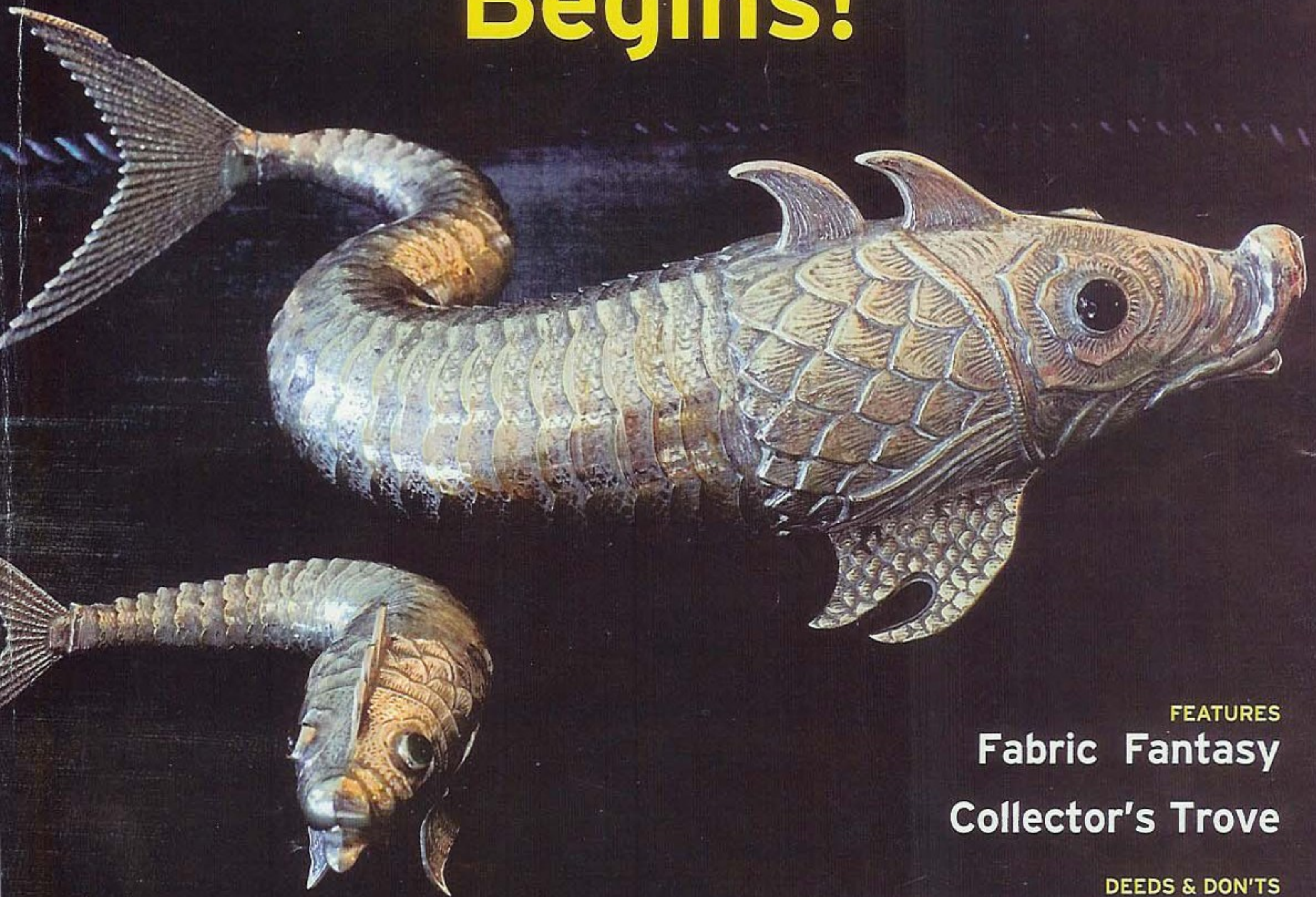


PALM BEACH COTTAGES & GARDENS

WWW.PBCANDG.COM | NOVEMBER 2005

The Season Begins!



FEATURES

Fabric Fantasy

Collector's Trove

DEEDS & DON'TS

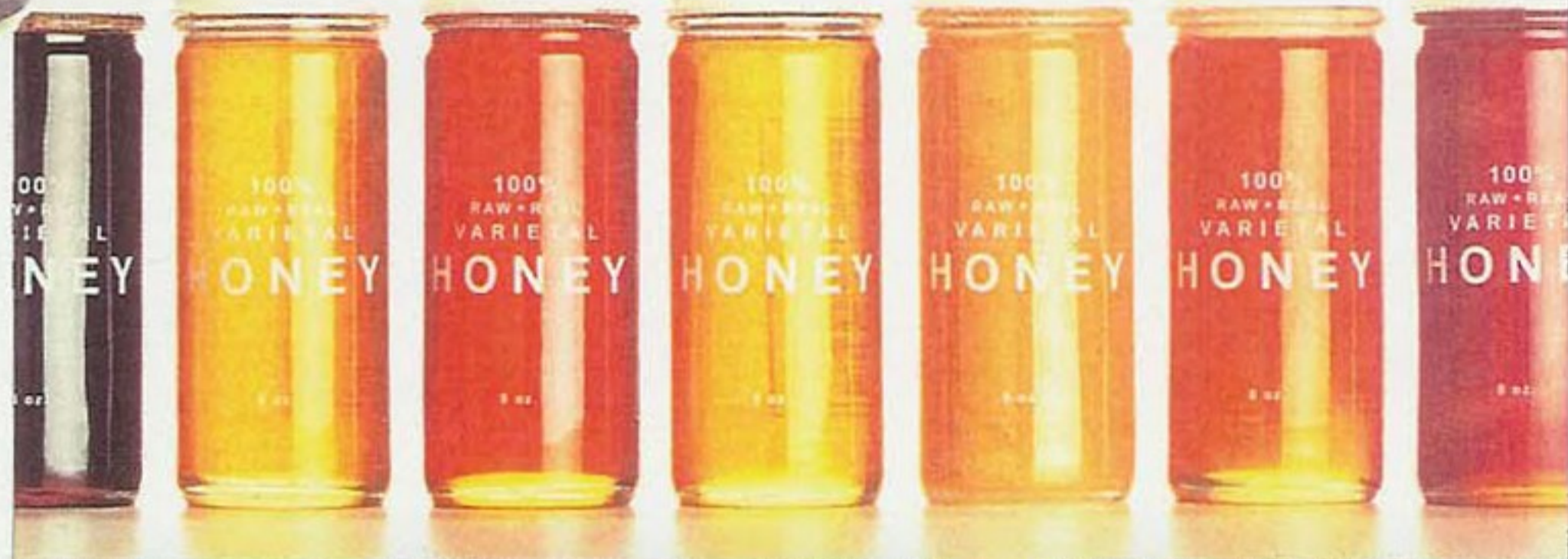
Where Are Prices Going?



WHAT'S NEW

Make It Your Beez wax

Support American beekeepers with Bee Raw Honey. The socially conscious, green company not only scours the country for the tastiest honey, but uses sleek packaging and custom gift sets that make it a tasteful—and a sweet—hostess gift. \$14, visit www.beeraw.com. —O.B.



Steeped in Color

Treat yourself to a bevy of Jacquard-loomed, 100-percent cotton tea towels imported from Southwest France. Available as a boxed set of four or individually, choose from dozens of different colors and patterns. \$18 each or \$72 for a gift set. (877) 762-4499 or visit www.mitchelobjet.com. —I.K.



All Aflutter

Fill the air with the subtle, elegant scents of Seda France's candles. The newest addition to the hand-poured candle company is a commanding size, so it won't disappoint your senses with a short shelf life. \$32, available at *Devonshire*, 340 Worth Ave., Palm Beach, (561) 833-0796 or www.sedafrance.com. —O.B.



Nature's Jewels

Naturally shaped gemstones inspire Amy Leiner. For her Harvest collection, she takes myriad semi-precious stones like amber, tiger's eye, dyed jade and yellow chalcedony and transforms them into works of wearable art. \$275–550, at *Mildred Hoyt*, 265 Sunrise Ave. Lower, Palm Beach, (561) 833-6010 or www.mildredboit.com. —I.K.

